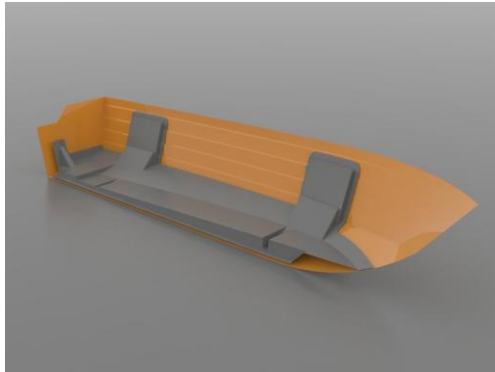


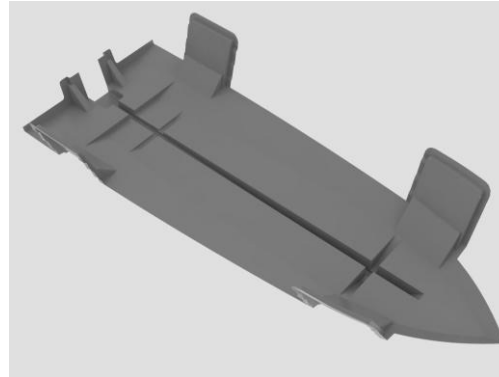


ALUMINIUM HULL WITH FIBERGLASS COCKPIT

We are proud to introduce you our new range of open aluminium boats, with fiberglass inner-liner. A range of 4 boats from 3,5m to 5m excellent for fishing on lakes or coastal waters, camping, sea trips, excursions in both very shallow waters and greater depths, or ferrying people all year.



Strength and no Vibration



Better look and confort



An unique Technology

We have developed an unique technology on such size of boats combining the greatest advantages of Aluminium and Fiberglass.

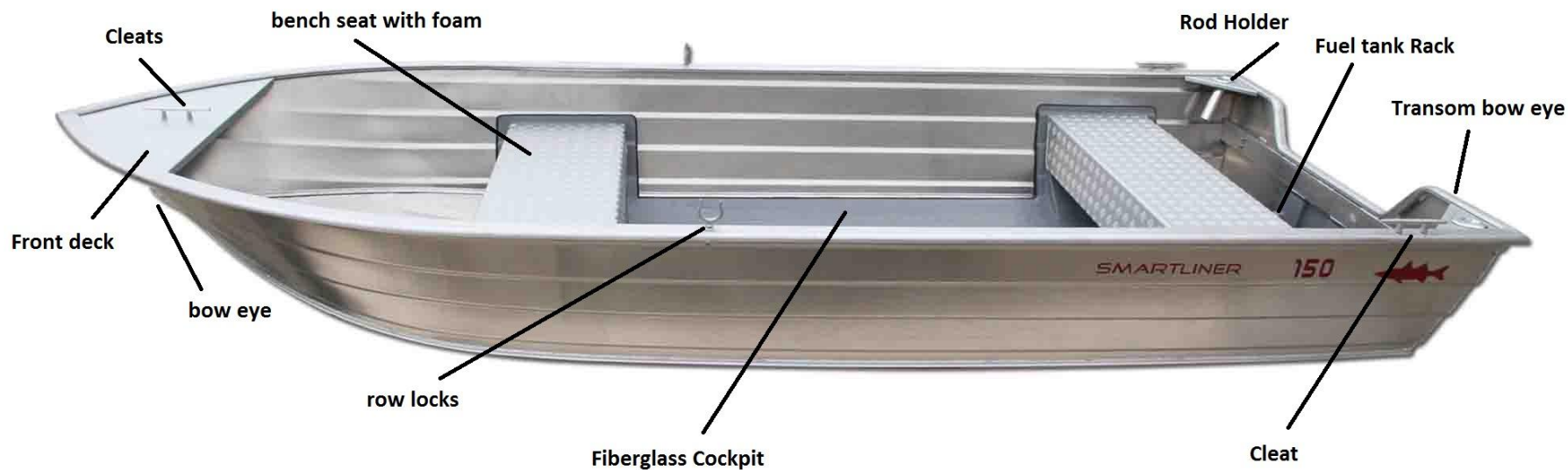
The result is clear and offers unique features:

- **Maintenance Free**
- **Interior Depth**
- **Interior Width**
- **More strength**
- **No vibration**
- **Better look**
- **Less Noise**
- **Lightness**
- **Confort**



SPECIFICATIONS	110	130	150	170
Length	3,50 m	4,00 m	4,50 m	5,00 m
Beam	1,52 m	1,77 m	1,94 m	1,95 m
Depth	0,66 m	0,80 m	0,89 m	0,89 m
Weight	111 kg	138 kg	186 kg	206 kg
Max. person cap.	3	4	5	5
Max. engine kW	11,2 kW	22,4 kW	26,1 kW	37,3 kW
Max. engine hp	15 hp	30 hp	35 hp	50 hp
Max engine weight	54 kg	82 kg	82 kg	121 kg
Transom (Transom Angle 13°)	S	L	L	L
Bottom thickness	1,6 mm	1,6 mm	2 mm	2 mm
Sides thickness	1,6 mm	1,6 mm	2 mm	2 mm
Transom thickness	3 mm	3 mm	3 mm	3 mm
Category	D	D	C	C

STANDARD EQUIPMENT: Fiberglass floor, 2 bench seats with styrofoam elements, front deck, 2 row locks, transom PVC plate, 1 front bow eye, 2 transom bow eyes, drain plugs, 3 cleats, fuel tank rack



Standard Equipment on the Smartliner 150





